

ENGINEERED FLUID, INC.

POST OFFICE BOX 723 • CENTRALIA, ILLINOIS 62801 • 618/533-1351 • FAX 618/533-1459

Overview of Pressure Reducing Installation Station Installation by Contractor



EFI will provide a complete custom factory built pressure reducing station. The station will be delivered to the job site or to the nearest passable road on a factory truck. The driver is an EFI employee and he is experienced with both off-loading and installation of factory built stations. He will provide guidance if required.

These photos and comments are general in nature and intended to provide an overview of a factory built PRV station installation. These are not to be misconstrued as specific project instructions.



The contractor will be responsible to lift the station from the truck and then set and anchor the station. This station is 9'-6" diameter by 9'-11" tall and weights approximately 5,500 pounds.



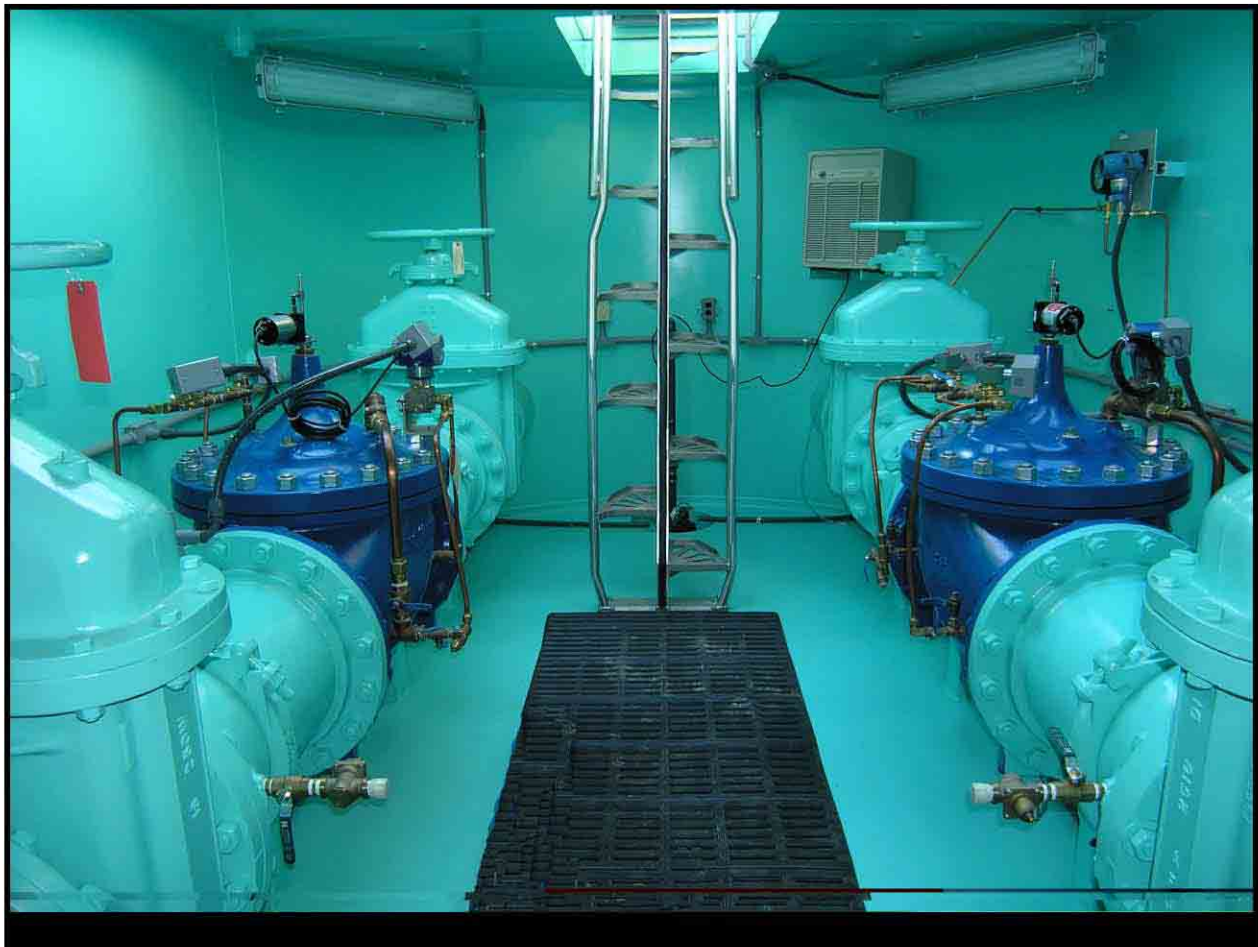


This photo shows one of four lifting plates on this station. The air vents need to be brought above grade by the contractor. They can be seen on the left side of the station. Just above the white label is the threaded connection for the sump pump. The contractor needs to run the sump pump drain as directed by the engineer. Electrical conduits are apparent in the lower photo.





The station must be secured to the slab as instructed by the engineer. The anodes are shipped loose and must be installed as instructed by the engineer. The wires must be run to the anode test panel located inside the station.



The pressure reducing station is finished inside and out. This is a larger station than the station shown previously, however it illustrates the finish of the inside of an EFI PRV station. All internal components supplied by EFI will be installed except for the dehumidifier. The dehumidifier needs to be removed from its packing material and plugged into the sump pump receptacle, which can install it during start-up. Start-up, warranty service, and training will be provided for this station and will be performed by an EFI employee.



EFI is not providing the telemetry, the contractor will need to buy and install the telemetry. The RTU is mounted above grade. The contractor is responsible for connections from the EFI interface panel to the RTU. All of the instrumentation wires will be terminated in a telemetry interface panel. The interface panels will contain terminal blocks and will be pre-wired to all required internal connections. Threaded entrances will be provided for the signal wires. The contractor will be responsible for final connections from the interface panel to the RTU panel. The installing contractor must make power connection. EFI will provide conduit from the sidewall to the power panel. The contractor will make the power service connections to lugs or the main breaker inside the power panel. No wire outside of the station is provided.

