



Boone County, Kentucky  
EFI Job Number 87830C  
Owner: Boone-Florence Water Comm.  
Engineer: Camp, Dresser & McKee  
Capacity: 4 pumps  
11.5 MGD  
1500 HP  
Reduced Voltage Solid  
State Starters



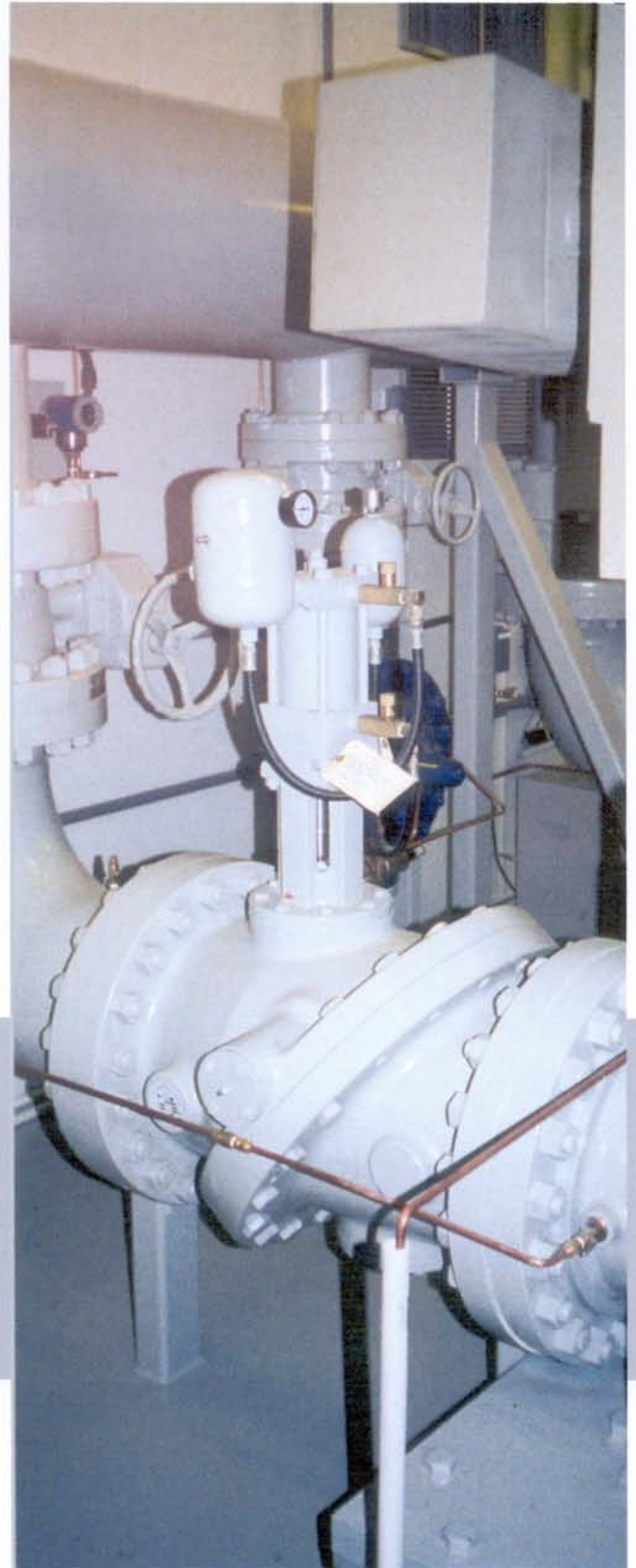


Engineered Fluid, Inc.  
P.O. Box 723  
Centralia, IL 62801  
(618) 533-1351  
FAX: (618) 533-1459  
[www.engineeredfluid.com](http://www.engineeredfluid.com)



Boone County, Kentucky  
EFI Job Number 87830C  
Owner: Boone-Florence Water Comm.  
Engineer: Camp, Dresser & McKee  
Capacity: 4 pumps  
11.5 MGD  
1500 HP  
Reduced Voltage Solid  
State Starters





Engineered Fluid, Inc.  
P.O. Box 723  
Centralia, IL 62801  
(618) 533-1351  
FAX: (618) 533-1459  
[www.engineeredfluid.com](http://www.engineeredfluid.com)